

**Bodkin**|Creative

---

*Branding  
& Identity*

*Stephen  
Bodkin*



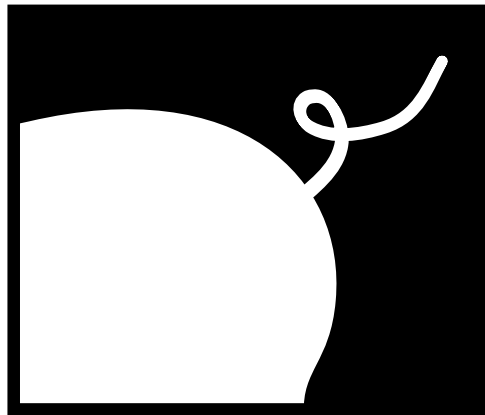
**BODYKARMA**



---

American  
International  
Resources

P I G



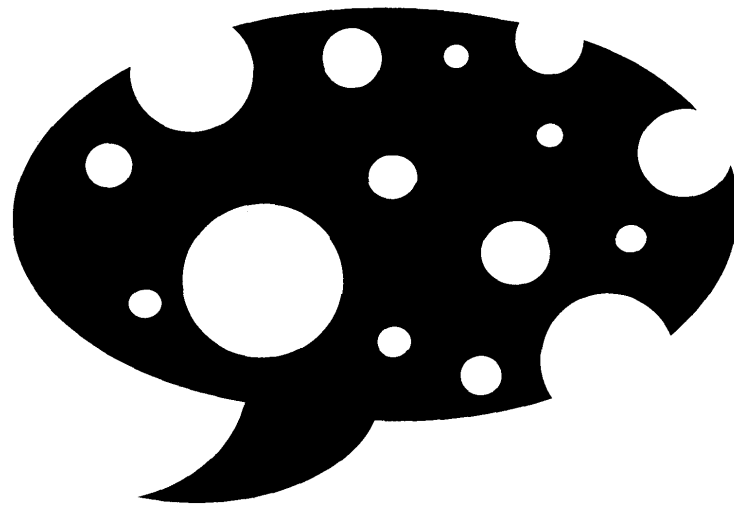
TALES

Disney's  
**Jungle  
Cubs**



THE ASKEN CENTER

---



Say Cheese Shops



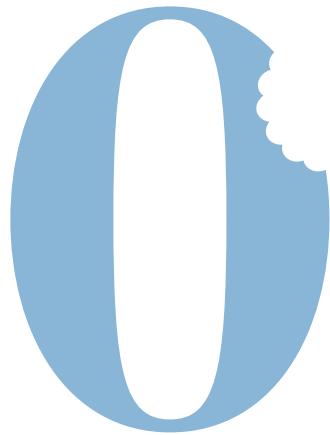


Disney's

**GOOF  
TROOP**



Nutriceutical  
Resources™



DAVID M. OSHEROW, D.D.S.  
ORTHODONTICS

**IMUS &**  
**OLDIES**  
**96.7**  
**WQSO**

CompWear™



ESSEX EDUCATION

Natural White<sup>®</sup>

**PRO**

**TIMEX**





SIMETRA™



Keith  
Rudolph  
DDS



GOODWIN  

---

COLLEGE



***Santa Energy***

BELL FALLA



**TWININGS<sup>®</sup>**

*Tea Blender's<sup>®</sup>*

**SELECTION**

*Thank you for looking!  
Please contact  
Stephen Bodkin at  
203.938.7004 for  
more information.*